



2025 Company Brief

Defense | Energy | Commercial | Transportation

Pennsylvania - Maryland - North Carolina

(814) 539-6922 | www.JWFI.com



Table of Contents

- [Company Overview](#)
- [Safety](#)
- [Certifications](#)
- [Training & Development](#)
- [Locations](#)
- [Capabilities](#)
- [Business Markets](#)
- [Awards](#)
- [Contact Us](#)



Faith - Family - Country

- Johnny's Welding was started in 1957 by John Polacek Sr. in a two-car garage located next to the family residence
- Bill Polacek purchased his father's business in 1987 and started Johnstown Welding & Fabrication
- As the company began to grow, the name changed to JWF Industries to reflect the diversification of capabilities



Our Mission

To Execute a Strategy for Growth with:
the Right People, the Right Processes, the Right Markets,
and the Right Customers

- Purpose: To allow our people to succeed
- Passion: Finding out what our customer needs. Then, growing and changing to meet those needs.





Employee and Community Driven

[Click here for more info!](#)



One of our many holiday traditions - turkey handout. Over 300 turkeys handed out each year.



JWF CARES -Employee driven group that provides assistance to employees and the community. Pictured is their annual fundraiser, the Cash Bash.



Striving to further education inside and outside the workplace.



A Culture of Safety is our Priority

- Full-time Health and Safety Specialists
- Total Recordable Incident Rate (TRIR) tracked
- Disaster recovery plans established
- State-certified safety committee
- Manager training to endorse safety to employees
- Safety analysis/Plan incorporated into every project
- Frequent and recurring training for all employees
- Company-provided PPE for all employees

[Click here for
more info!](#)



Commitment to Quality: Certifications

ISO 9001:2015 Certification

- ITAR Registered
- American Welding Society (AWS)
- American Society of Mechanical Engineers (ASME)
- Military Welding Certifications
- Ground Combat Vehicle Welding Codes
- NAVSEA -Pursuing certifications
- All NDT Employees are certified to ASNT SNT-TC-1a

Requirements

- CWIs = 5 employees
- PTs = 9 employees
- MTs = 7 employees
- VTs = 8 employees

[Click here for more info!](#)



Training and Development



- In-house Weld School
- State Certified Apprenticeship programs for Machining and Welding
- Full-time Weld Instructor
- Full-time Machining Instructor
- Tuition Reimbursement
- On-Site professional development
- Quarterly Internal Job Fairs





Facility Locations

Johnstown, PA

- Iron Street
- Cramer Pike
- Windber
- Woodvale



Baltimore, MD

- AIME –Atlantic Industrial Mechanical & Electrical

Edenton, NC

- Fabrication and Integration
- Barge Shipping



Facility Locations



Iron Street - Johnstown, PA
600,000 sq. ft.



Cramer Pike - Johnstown, PA
200,000 sq. ft.



Windber - Windber, PA
120,000 sq. ft.



Woodvale - Johnstown, PA
100,000 sq. ft.



Edenton - Edenton, NC
100,000 sq. ft.



AIME - Baltimore, MD
100,000 sq. ft.



Capabilities - Laser

[Click here for more info!](#)

- Mitsubishi 4020 RX-F 8.0KW EDM Laser
- BLM Lasertube LT8.10
- TruPunch 5000
- Nautilus 3775 Wet Deburring Machine





Capabilities - Machining

- Over 30 CNC machining centers
- Okuma Double Column Mill 10'x26'x4.25'
- HAAS VF-14 Vertical Mill, 150"x40"x30"
- G&L 6' x 8' x 20' Horizontal Mill
- VTEC 20' x 15' x 55" Vertical Bridge Mill
- Parpas Dinamika Horizontal Boring Mill
- Haas VF-9 Vertical Machining Center
- (3) Anderson Mass 5



[Click here for more info!](#)



Capabilities - Large Machining

[Click here for
more info!](#)



Onsrud - Vacuum Table

- Travels 15' x 35'
- 18 HP; 24,000 RPM
- Five-axis capabilities
- Tolerance 0.001



Parpas Dinamik

- Horizontal Machining Center
- X - 355", Y - 122", Z - 63"



Capabilities - Welding

[Click here for more info!](#)

Dual Robot Arm Panasonic Perform Arc

79" Reach both arms
Offline programming
Water cooled torches
Dual Panasonic G3 Series 64-bit RISC
Windows CE Robot Controllers
Rotating capabilities up to 220lb
Swing diameter of 70"
Head to tail positioner distance of 168"

Lincoln 55 Dual Arm Robotic Weld
Two Fanuc 710 arms with 20' reach and 40' travel for large products

Lincoln Robotic Welder
Single 710 Fanuc arm with 12' reach with laser tracking

- 195 calibrated welding machines
- 12 single and dual arm robotic welding cells
- Over 160 AWS certified welders (steel, stainless, armor, aluminum)



Capabilities - Forming and Bending



- Bystronic Xpert 320
- Bystronic PR 200 x 4100
- Diamond BB013
- Xpert 40

[Click here for more info!](#)





Capabilities - Coatings

Largest non-dedicated powder coating
line east of the Mississippi River

- 60,000 square foot automated paint line
- Blast, prime, wet paint, and powder coat
- Polyurethane, water, and epoxy-based paints
- CARC, Military and commercial requirements
- 10' x 20' x 30' part capability
- Part assembly, sub-assembly, and part kitting
- SW-XERP-B-SD-16-50-SB Powder Coat System
- 20' high x 20' wide x 40' long

[Click here for
more info!](#)



Defense

Serving DoD Direct and Tier-One defense contractors since 2002

- Ground Mobility
- Vehicle Integration
- Armor Cabs
- Mobile Radar
- Dirigible Launchers
- Naval Ship Building



[Click here for more info!](#)



Vehicle Integration

Flyer 72 Assembly Line; the first company in the region to host an assembly line such as this

[Click here for more info!](#)



1,000+

SOCOM GMV 1.1 chassis, armor kit, and body panel fab kit supplier, secondary vehicle integrator

245+

Up-armorings of HMMWVs for naval special warfare and MARSOC in nine month POP



Programs of Note

JWF fabricates BAE
Systems HIMARS Cabs for
LM MFC

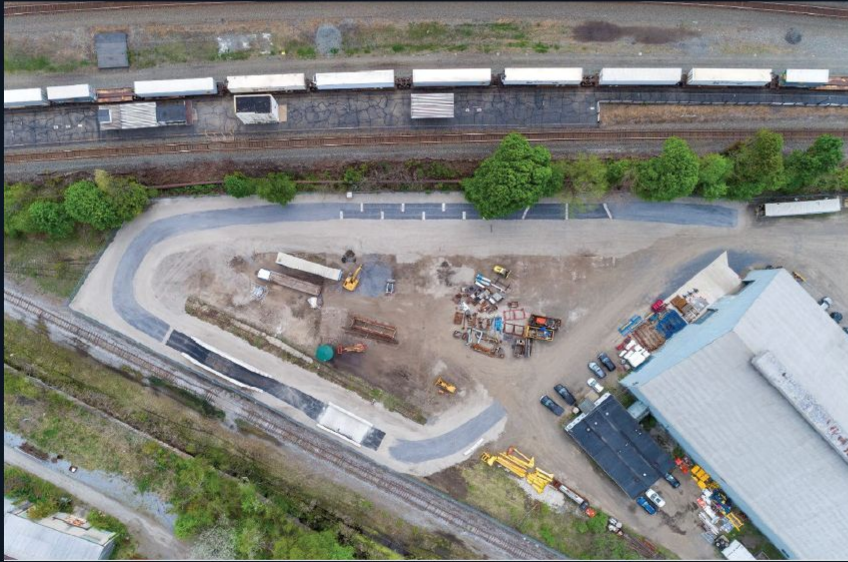


Mack Defense Heavy-duty
Dump Truck (HDT)
armored cab (Volvo Group)



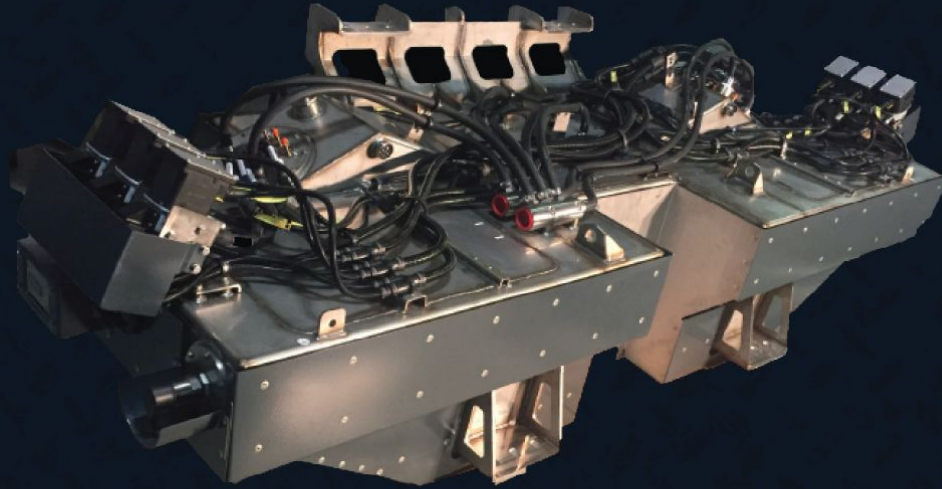


Onsite Vehicle Test Course



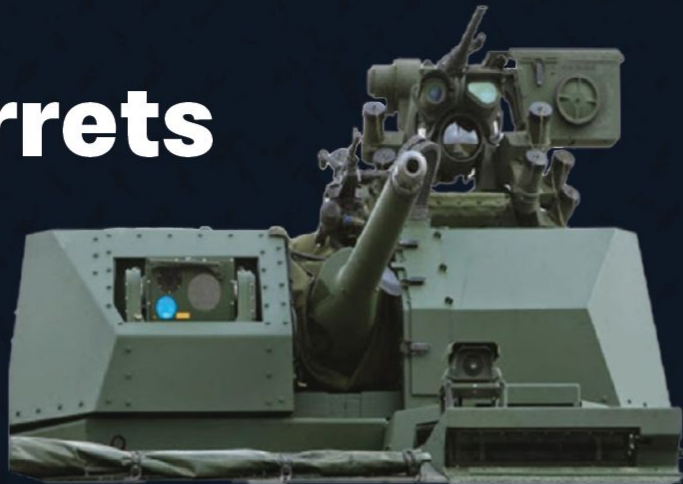


Fuel and Fluid Tanks





Turrets



RWS Hardware and BPK

Radar Platforms



Mooring Stations

CMC Missile Service Units

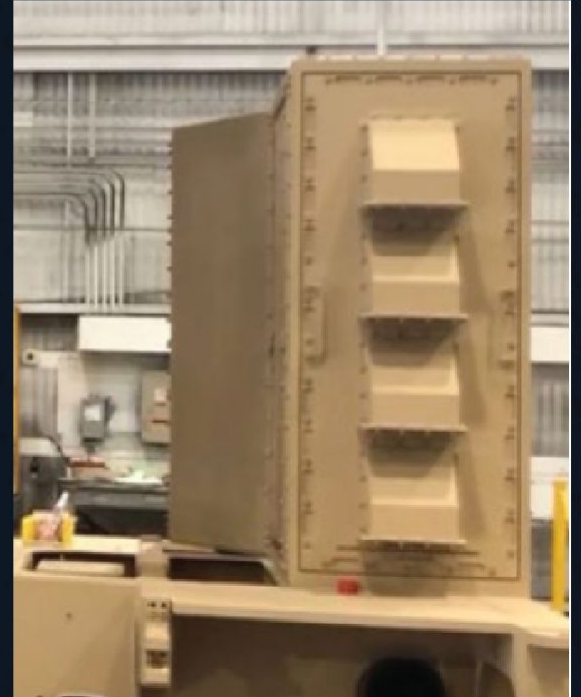




Cabinets

Shipboard

EMI/EMC
Shielded





Commercial

- Construction
- Logistics
- Build-To-Print
- Contract Manufacturing

[Click here for more info!](#)





Construction Equipment

JWFI is partnered with JLG Industries to produce major components for the 1850 Ultra boom as well as many other components for other boom models



JWF Industries exclusively manufactures ThermoTraxx –The world's first track frame heating system for track-style heavy equipment.



Mobile Platforms

JWF Industries provides integrated mobile platform manufacturing solutions for logistics companies





Energy

Patented and customized products to meet energy needs

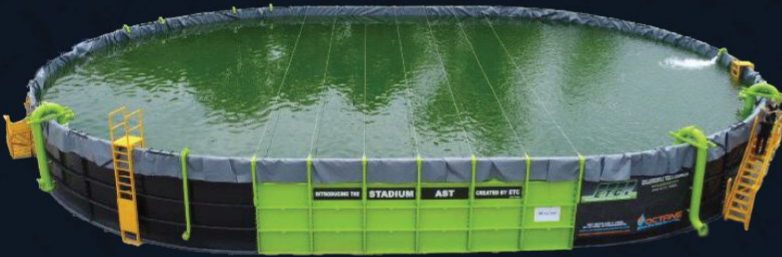
[Click here for more info!](#)

- Renewable Energy
- Oil and Gas
- Chemical





Oil and Gas



Stadium AST



Stackable AST



ASME Pressure Vessel and Vertical Tanks





Recent Awards

2024

- BAE Systems Quality Supplier of the Year
- PA Business Central Top 100 People
- PA Business Central Top 100 Companies
- Best Places to Work in PA
- Pittsburgh Smart 50 Honoree

2023

- Best Places to Work in Pennsylvania
- BAE Systems Silver Supplier of the Year
- BAE Systems Supplier of the Year -AMPV Manufacturing
- Pittsburgh Smart 50 Honoree
- PA Business Central Top 100 Companies and People
- Lockheed Martin Missiles and Fire Control “Exceptional Small Business Performance” Award
- US Best in Class Employer by Gallagher

2022

- US Best in Class Employer by Gallagher
- BAE Systems M88A3 Supplier of the Year
- Pittsburgh Smart 50 Honoree and Sustainability Award Recipient
- PA Business Central Top 100 Companies and People

2021

- BAE Systems Small Business Supplier of the Year
- BAE Systems Bronze Supplier of the Year
- PA Business Central Top 100 Companies and People

2020

- BAE Systems AMPV Supplier of the Year
- PA Business Central Top 100 Companies and People
- Pittsburgh Smart 50 Honoree

Contact Us



BEST PLACES
to work in **PA** 2024

POC: Shawn Koontz
Desk: (814) 532-4144
Cell: (814) 525-1418
skoontz@jwfi.com

Contact Information
JWF Industries
JWF Defense Systems
84 Iron Street
Johnstown, PA 15906

POC: Christina Galasso
Desk: (814) 539-6922, x277
Cell: (814) 525-5454
cgalasso@jwfi.com